

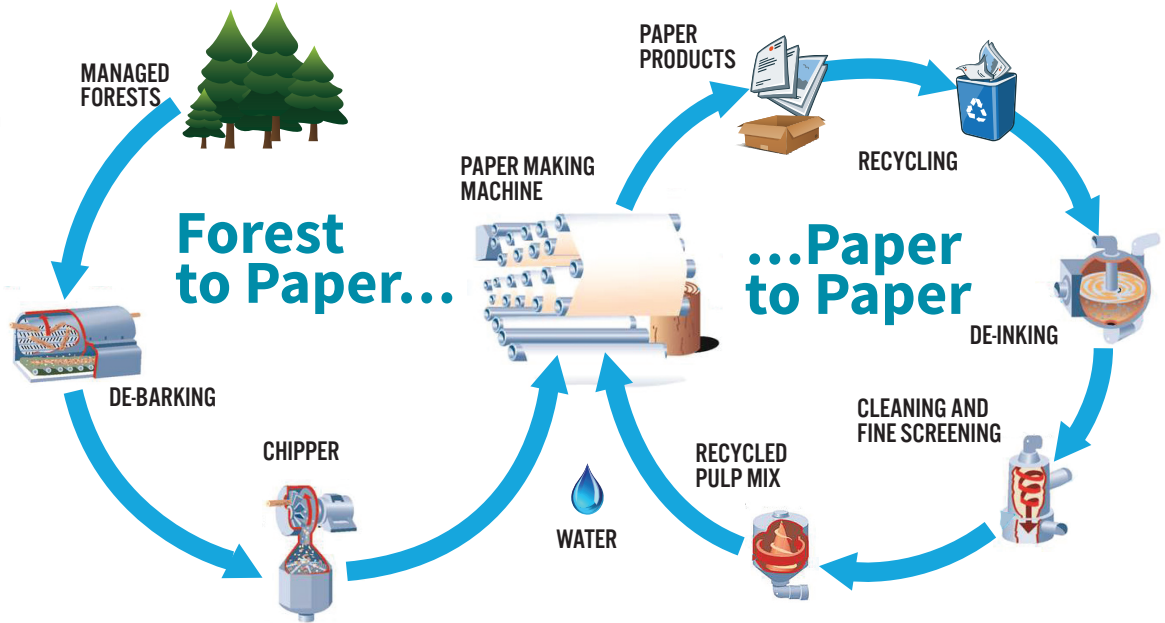


Complete the Circle

Part A. The Life Cycle of Paper

Some of the resources we use every day are renewable, meaning that they are naturally restored or replenished. Some are non-renewable; once they are taken from the Earth, they won't be replaced for millions of years.

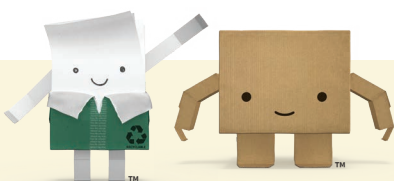
Paper is both renewable and recyclable. In fact, a piece of paper or cardboard can be recycled about seven times before the fiber is too small to use it again! That means paper's life cycle doesn't end in the trash can. Look at the diagram. It shows how paper and cardboard products are first made from trees, then recycled to become clean, new paper and cardboard products. The steps in this process are described in the chart below. Number the statements to put them in the right order.



- | | |
|---|--|
| <p>___ A. The pulp is squeezed flat and rolled into sheets of paper or cardboard.</p> <p>___ B. The trees are chopped into wood chips and ground up to become pulp, which is like a watery stew of wood fibers.</p> <p>___ C. At the paper plant, special machines remove any ink or glue from the recycled paper products.</p> <p>___ D. Trees from managed forests are cut down and taken to the paper plant.</p> | <p>___ E. The recycled paper products are shredded and turned into pulp.</p> <p>___ F. The bark is removed from the trees to become mulch.</p> <p>___ G. People put their used paper and cardboard into a recycling bin.</p> <p>___ H. The pulp is squeezed flat and rolled into sheets of paper or cardboard.</p> |
|---|--|

Part B. Recycling Race

The increasing popularity of online shopping can mean that cartons are delivered to your home almost every day. What happens to those cartons after you've opened them? And what happens to the cardboard packaging inside the cartons, and the boxes that come with products you bring home from a store? On the back of this sheet, make a week-long diary of all the cartons and boxes your family receives, and note how many of them you put in the recycling bin versus the household trash. Don't forget small boxes that are easy to "toss" – waffle boxes, cosmetic boxes, etc. Make it a class competition and compare results among your peers. Who won the cardboard recycling race with the largest number of cartons and boxes?



Paper and cardboard are from a renewable resource – trees. Learn more at www.howlifeunfolds.com/3645-2/

