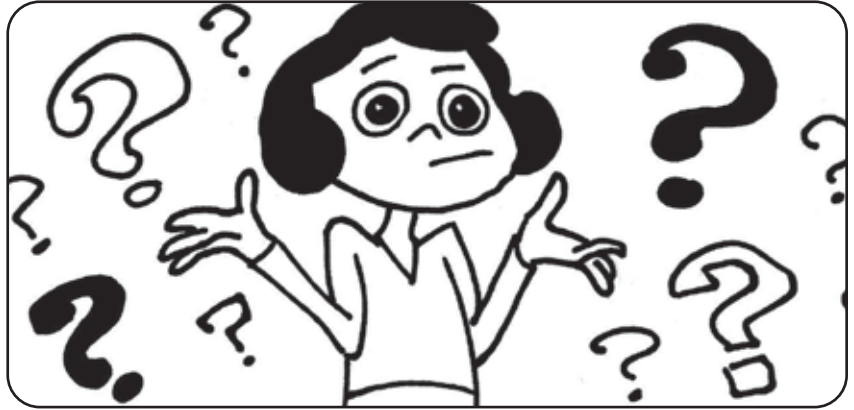




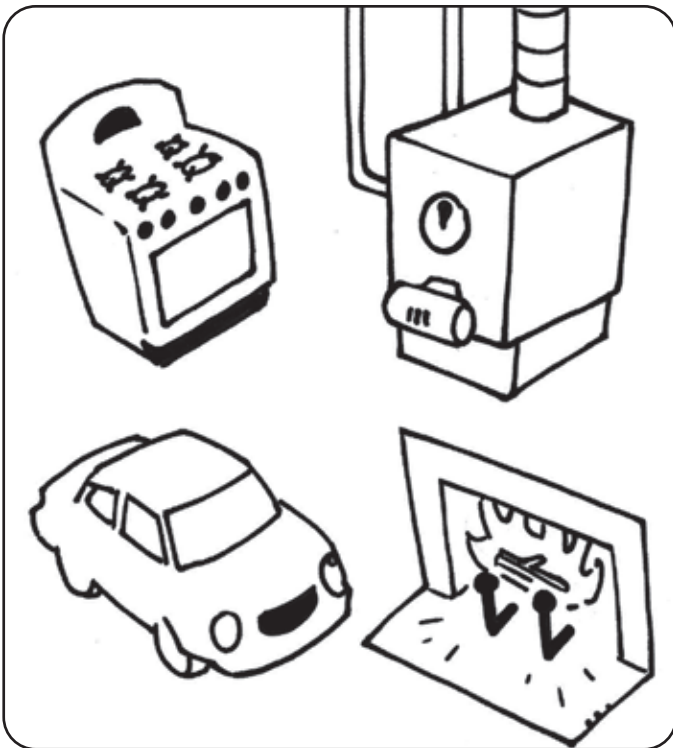
Learn About Carbon Monoxide (CO) Alarms

Why do I need carbon monoxide (CO) alarms?

Carbon monoxide is also called CO. It is a gas, and you cannot see, smell, or taste it. It can make you sick or even kill people and pets. CO alarms can help keep you safe. They let you know if there is too much CO in your home.



Where does CO come from?



CO can come from equipment that you use for heating and cooking. This equipment includes wood stoves, fireplaces, gas stoves, furnaces, and some heaters. Car and motorcycle engines also produce CO.

How can I make my home safe from CO?



- Have heating and vent systems cleaned and inspected every year by a professional.
- NEVER burn charcoal indoors.
- NEVER use a charcoal or gas grill to cook inside your home.
- Make sure vents and chimneys are not blocked.
- NEVER leave a car running inside a garage.
- Do not use portable generators inside your home.



You cannot see, smell, or taste CO in the air. You need CO alarms to keep your home safe.

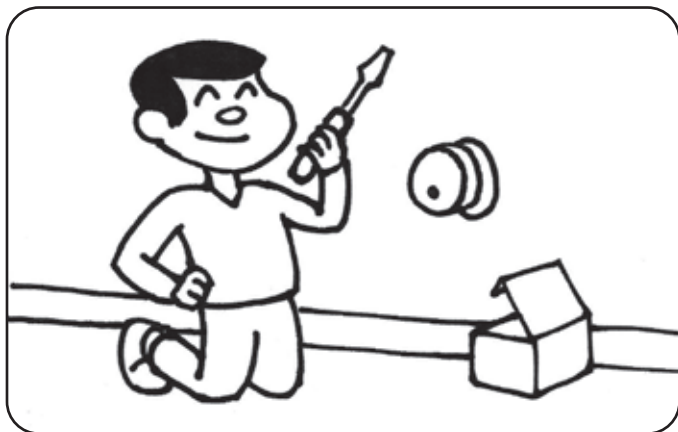
How do I know when there is too much CO in my home?

Your CO alarms will make a warning sound when there is too much carbon monoxide in your home. The sound has four beeps: BEEP-BEEP-BEEP-BEEP. This is followed by a pause and then will repeat four beeps: BEEP-BEEP-BEEP-BEEP. If you hear that sound, get out fast. After you get outside, call 9-1-1 or the fire department for help.

You should also look for these symptoms of carbon monoxide poisoning.

- Headache
- Trouble breathing
- Feeling dizzy
- Feeling sick to your stomach
- Feeling tired
- Being confused
- Not able to wake up

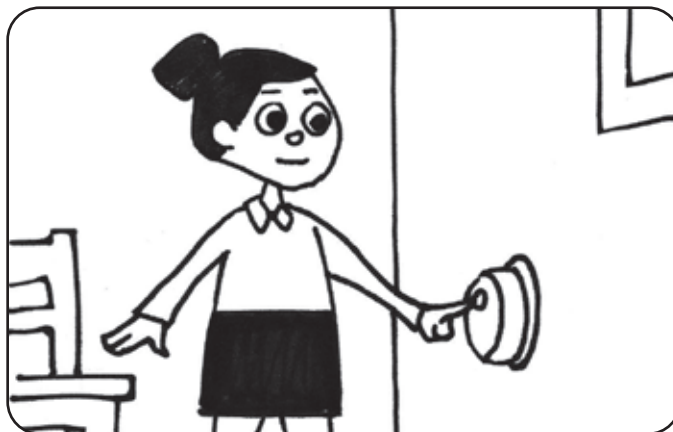
Where should I put CO alarms in my home?



You should have a CO alarm on every level of your home, including the basement, and outside each separate sleeping area.

CO alarms should be installed on the wall or ceiling. Follow the directions on the box to be sure you put the alarms in the right place.

How do I keep my CO alarms working?



Push the test button on your CO alarms at least once each month. Replace any alarm that doesn't work. CO alarms last between 5 and 10 years. When your alarm starts to make a short chirping sound, you will need to put in a new battery or get a new CO alarm. Check the directions that come with your alarm.

I already have smoke alarms. Why do I need CO alarms too?

Smoke alarms let you know when there is smoke from a fire. They cannot let you know if there is too much carbon monoxide. You need CO alarms for that.

Smoke alarms and CO alarms both make a loud beeping sound. How can I tell which one is going off?

Smoke alarms and CO alarms make different beeping sounds when there is danger. Learn the difference.

- A smoke alarm makes three fast beeps when there is smoke — BEEP-BEEP-BEEP
- A CO alarm makes four fast beeps when there is too much carbon monoxide — BEEP-BEEP-BEEP-BEEP

