

FOLLOW THE WATER

Water lost from glaciers doesn't just raise sea levels. As you'll see in the remarkable *IMAX presents The Last Glaciers*, as glacier water melts, it travels through mountains, valleys, farmland, and coastal areas. A glacier doesn't have to be close to impact human activity.

PART 1

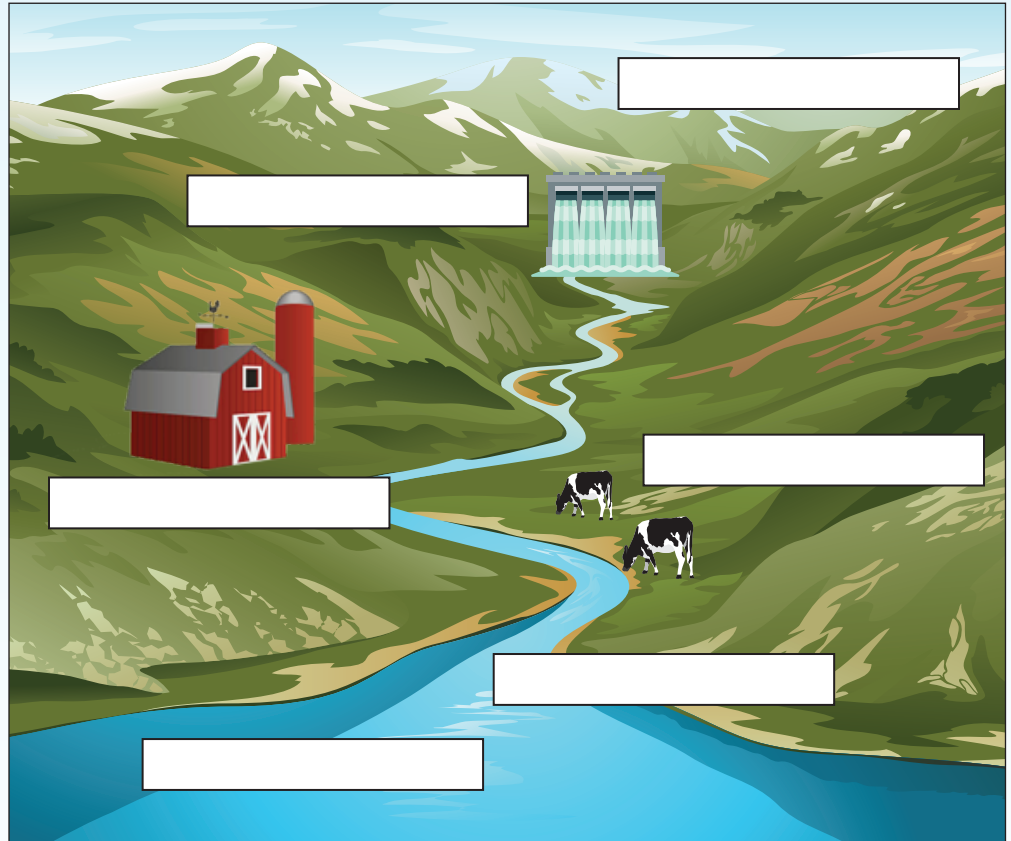
Match the impacts of glacial melt water to locations in this diagram of a glacier and river system.

Examine the glacier and river system.

Label the diagram.

Glacier Loss Impacts

- Loss of farmland/food shortages
- Avalanche risk from melting shelf ice
- Heavy metal in water impacting livestock
- Loss of hydropower
- Fresh water mixing with salt water, water scarcity
- Loss of coastal land



PART 2

Create a poster and/or social media post to encourage water stewardship and conservation in school and at home. Use these tips to help you.

Tips for Conserving Water and Keeping It Clean

- Use an Energy Star® dishwasher instead of hand-washing dishes.
- Run the washing machine with a full load of clothes only.
- Use cold water to wash clothes.
- Take shorter showers.
- Turn off the water when you brush your teeth.
- Fix any leaks, even a small drip over time can add up.
- Use a rain barrel to catch water for watering plants and grass.

