

Join the HAWTHORNE HEROES Viewing Club

Christina Hawthorne is an “unsung hero” whose character, dedication, and concern for others makes a vital difference in the lives of all those around her. Jada Pinkett Smith stars as Christina Hawthorne in the compelling new **TNT drama series, *Hawthorne***, beginning June 16, 2009 at 9 PM Eastern/8 PM Central.

Recently widowed and the mother of a smart, willful teenager, Christina juggles her career and her role as a single parent. At work she fights battles she knows she often won't win. Whether treating the homeless woman with an abandoned newborn in front of the hospital like a human being or trying to talk a suicidal

cancer patient off the roof, Christina challenges hospital administrators, heartless doctors, apathetic colleagues, and a system that sometimes forgets it's there to serve the sick. She can't give up on anyone. And because of that, we are introduced to a real hero. For more information on the series *Hawthorne*, visit <http://www.tnt.tv/series/hawthorne>.

To supplement your understanding of the series and how it reflects our lives, here are discussion questions and recommended reading on related themes. As you consider the issues, ask yourself, “If you were in the same situations what would you do?”

HAWTHORNE Heroes Discussion Questions

1. Do large institutions—hospitals, insurance companies—care about the individual enough? Give examples both pro and con.
2. Discuss examples of nurses or other medical professionals who have gone beyond the call of duty in your own life or in the lives of people you know.
3. Christina Hawthorne can be described as a compassionate nurse who puts her patient's well-being first. What can a community do to nurture compassionate thinkers like Christina? How can you be more compassionate to your family, co-workers, or community members?
4. Christina is dealing with the anniversary of her husband's death and the duties of a single mom. What are some challenges that a single parent must face in trying to successfully raise a child? Does our community support single parents and their challenges?
5. What are the qualities of a hero? Who are your heroes? Why?

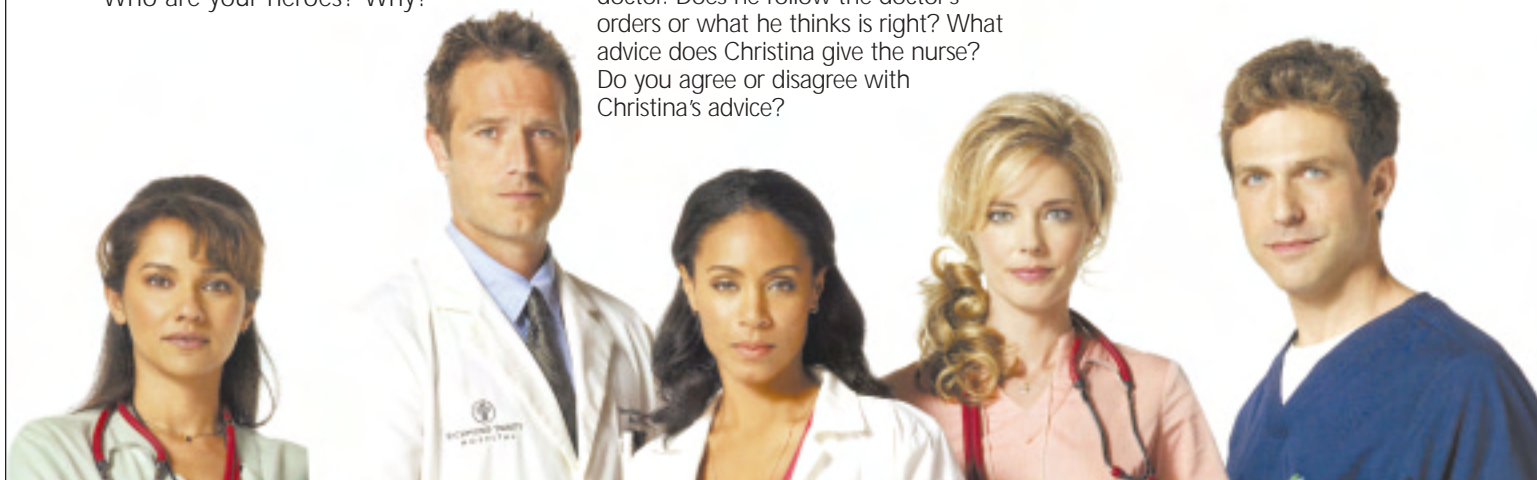
Questions for Episode 1

6. In *Hawthorne*, Christina struggles with situations where sometimes she must go above and beyond her responsibilities as a nurse. Do you think Christina makes the right decisions or should she follow protocol?
7. Christina breaches hospital security as she rushes to the roof to try and save her friend and cancer patient from committing suicide. Was it ethical for her to put her career on the line to help her friend? How would you convince a suicidal person that life is worth living? Would you break the rules to help a friend in danger?
8. Christina also is approached by Isabel, a homeless woman with a newborn in need of care. Do you think Christina makes the right decision? How does society treat the homeless? How does our community treat the homeless? Are there steps our community can take to improve their circumstances?
9. A fellow nurse struggles with a patient that he feels is misdiagnosed by a doctor. Does he follow the doctor's orders or what he thinks is right? What advice does Christina give the nurse? Do you agree or disagree with Christina's advice?

10. Christina is a single mom dealing with a rebellious teenage daughter. Do you think she deals with her daughter and school appropriately? What parental advice would you give Christina?

Read About These Women Heroes

Abigail Adams, Louisa May Alcott, Joan of Arc, Susan B. Anthony, Clara Barton, Dr. Elizabeth Blackwell, Marie Curie, Amelia Earhart, Dian Fossey, Indira Ghandi, Althea Gibson, Coretta Scott King, Emma Lazarus, Golda Meir, The Mirabal Sisters, Antonia Novello, First Lady Michelle Obama, Ellen Ochoa, Rosa Parks, Hanna Senesh, Sojourner Truth, Oprah Winfrey



Tune in to *Hawthorne*, Tuesday nights beginning June 16, 2009 at 9 PM Eastern/8 PM Central to see how everyday people can do extraordinary things.



Start a HAWTHORNE HERO PROJECT

In *Hawthorne*, a new drama series airing on TNT beginning June 16, 2009 at 9 PM Eastern/8 PM Central, Christina Hawthorne takes on the causes of those who have no one else to fight for them. She treats the homeless like real human beings and understands the hopelessness of a cancer patient who wants to put a quick end to his misery. Everyone, in every community, needs a hero like Hawthorne.

Ideas for Your Community Hero Project

Below are some suggestions for a *Hero Project* you might institute in your community. These "idea starters" are sure to generate great projects that would help your specific community needs.

Health: Organize a weekly question and answer series from a variety of physicians who would address pre-natal care, childhood illnesses, teen health, women's issues, diabetes, geriatric health, and cardiovascular problems.

Nutrition: Develop handouts on healthy eating that you make available to all patrons or members. Provide healthy snacks for children attending classes or functions. Organize a diet and exercise club. Educate community members on how healthy eating goes hand-in-hand with diabetes management, as well as other illnesses.

Crisis Support: Organize an economic help team—local bankers, CPAs, attorneys—to disseminate timely information about finding a job, credit counseling, and consolidating loans and debt. Create a food drive in which non-perishable foods are collected for families who are dealing with a health, economic, or family crisis.

Working Moms: Organize an after-school program for kids that offers homework help, tutoring services, and recreational activities. Organize a *Mom's Support Group* and encourage cooperation among the members.

The Elderly: Provide healthy meals for the elderly in the community. Arrange regular visits to home-bound elderly to provide companionship—playing games, talking, or sharing a good book. Create a help line for the elderly to call with problems, or even to just hear a friendly voice. Organize volunteers to mow lawns, do odd jobs, or make a daily call to an elderly person who lives alone.

Homeless Shelters and Soup Kitchens: Donate food or supplies to your local homeless shelter or soup kitchen. Collect and deliver clothing.

Implementing Your Community Hero Project

You'll need to organize your vision, mission, goals, and strategies.

1. **Name:** Give your project a name.
2. **Mission:** Write one sentence that describes what, why, and how your group does its work.
3. **Vision:** Complete the following sentence with the ideal vision for your project:
"(Name of group) is working toward the day when... (describe the change you wish to see in your community)."
4. **Establish Objectives and Tasks:** Define your short-term objectives and describe the specific tasks that you will need to take to achieve the objective. Ask members of your group to volunteer for a task.
5. **Create A Timeline:** Determine when tasks and objectives will be initiated and when they will be completed.

Project Planning Tools

Consider the following questions:

- Within the community we wish to serve, whom do we contact?
- How much manpower do we need? Can we invite others to help us?
- Do we need to train ourselves/others to provide the service? If yes, what training do we need and who can provide the training?
- What is the date, time, and location of the service we want to provide?
- Do we need permissions from our organization or partners, permits for our location, signed agreements, etc.?
- How much money do we need to implement our goals? Do we need to implement fund-raising projects or grant-writing?
- How do we delegate the various tasks and responsibilities?
- What would success look like?

Tune in to *Hawthorne*, Tuesday nights beginning June 16, 2009 at 9 PM Eastern/
8 PM Central to see how everyday people can do extraordinary things.



Join the HAWTHORNE HERO PROJECT

Dear Community Members:

A new television series beginning **June 16, 2009, on TNT called *HawthoRNe***, shows us how everyday people can make real, life affirming changes in the community around them. Through this series, we have been inspired to encourage you to become part of our community's **HawthoRNe Heroes Project**.

HawthoRNe takes place at Richmond Trinity Hospital in Richmond, Virginia, where the strong-but-caring Chief Nursing Officer, Christina HawthoRNe, often finds herself in the position of reluctant hero, battling issues that no one else will assume. Told from the nurse's perspective, *HawthoRNe* focuses on the emotional impact and private lives of the people Christina treats and on her own daily challenges as a single mother, leader, and friend.

Jada Pinkett Smith, the star and executive producer of *HawthoRNe*, says that her character, who is a nurse, "heals some aspect of her own soul as she tries to help her patients." We believe that we can all heal our souls as we help our community.

Therefore, we invite you to join our **HawthoRNe Heroes Project**. The TNT network has provided us with materials to start organizing our own community effort. We will select a mission that will positively affect the members of our community and ask for your input in making this selection.

Please join us on _____ at _____ to help us get started.

We will meet at _____.

We look forward to seeing you and doing the important work that will improve our hearts, our souls, and our community.

Sincerely,

Tune in to *HawthoRNe*, Tuesday nights beginning June 16, 2009 at 9 PM Eastern/
8 PM Central to see how everyday people can do extraordinary things.

