

Dear Educator:

Get a head start on the holidays this year with this special assortment of fun classroom activities inspired by the new family movie, **Elf**.

Coming to theaters November 7, **Elf** is a modern-day holiday adventure mixed with old-fashioned make-believe and plenty of laughs. Starring Will Farrell, it is the story of Buddy, who crawls into Santa's toy bag as a baby and is whisked off to the North Pole, where he is raised as an elf. A misfit who grows to be three times the size of his elf family, Buddy ultimately heads to his birthplace, New York City, to seek out his real family. Unfortunately, they turn out to include a Scrooge-like father

(James Caan) and a cynical eight-year-old stepbrother who doesn't believe in Santa. Worst of all, everyone seems to have forgotten the true meaning of the holidays. But using his simple elfin ways, Buddy sets out to single-handedly win over his family and save Christmas in New York, hoping to at last find his true place in the world. The film features an all-star ensemble cast led by Ed Asner as Santa Claus, James Caan, Bob Newhart, Mary Steenburgen,

and Zoey Deschanel.

To help you add some elfin magic to your class plans, this free educational program provides reproducible worksheets that combine standards-based lessons in language arts, math, art, and music with hands-on activities that build on the film's themes of appreciating differences and finding the best in ourselves and in others. Developed in cooperation with New Line Cinema and the makers of Etch A Sketch®, the program is designed for use with students in grades 1-4.

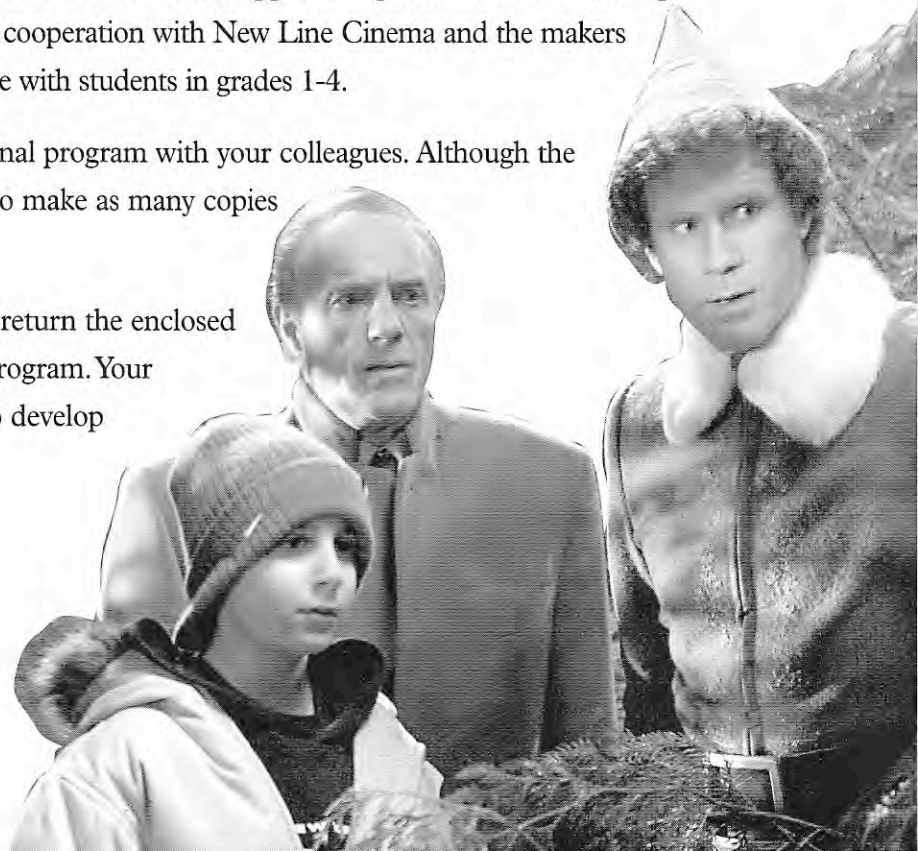
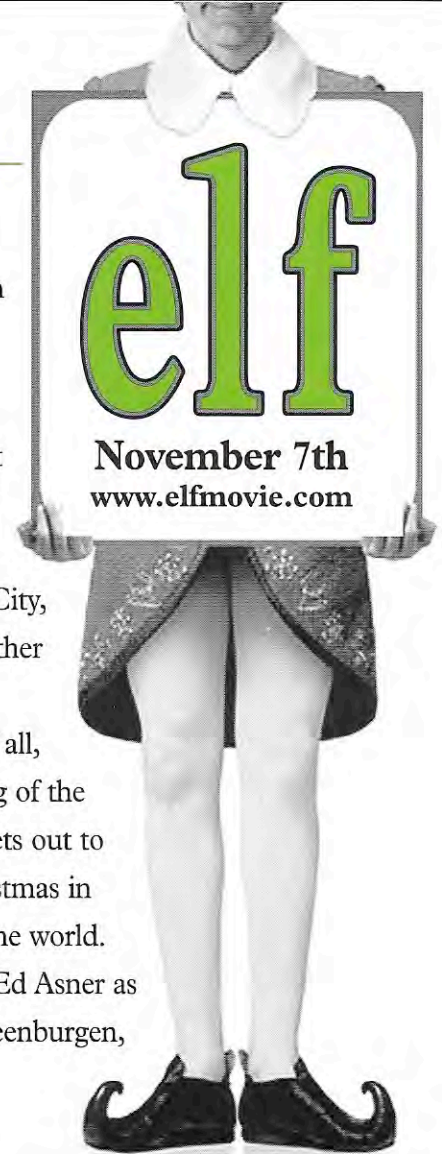
We encourage you to share this educational program with your colleagues. Although the materials are copyrighted, you have permission to make as many copies as you need for educational purposes.

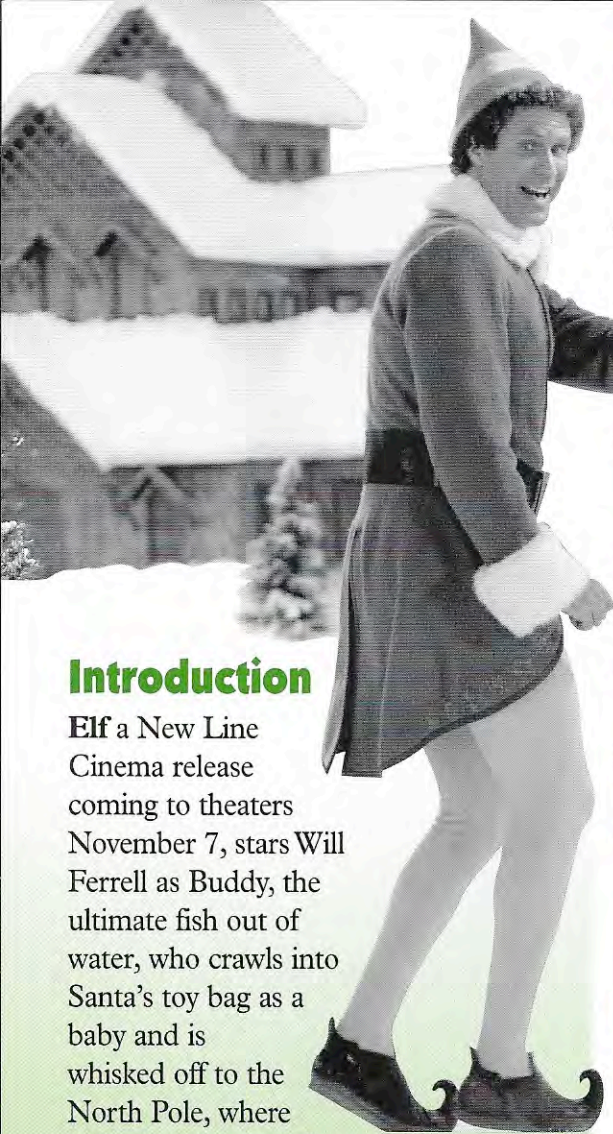
We also encourage you to complete and return the enclosed reply card to let us know how you enjoyed the program. Your comments are important to us as we continue to develop programs that meet your needs.

Sincerely,



Dr. Dominic Kinsley
Editor in Chief





Introduction

Elf a New Line Cinema release coming to theaters November 7, stars Will Ferrell as Buddy, the ultimate fish out of water, who crawls into Santa's toy bag as a baby and is whisked off to the North Pole, where he is raised as an elf. A misfit who grows to be three times the size of his elf family, Buddy ultimately heads to his birthplace, New York City, to seek out his real family. Unfortunately, they turn out to include a Scrooge-like father (James Caan) and a cynical eight-year-old stepbrother who doesn't believe in Santa. Worst of all, everyone seems to have forgotten the true meaning of the holidays. But using his simple elfin ways, Buddy sets out to single-handedly win over his family and save Christmas in New York, hoping to at last find his true place in the world.

This free educational program uses fun activities that focus on Buddy and the film's themes of appreciating differences and finding the best in ourselves and others to bring the positive spirit of the holidays into your classroom.

Target Audience

This program is designed for use with students in grades 1-4 as a supplement to the math, language arts, art, and music curricula.

Program Objectives

- ✧ To reinforce the spirit of the holiday season through art, math, language arts, and music activities.
- ✧ To help students identify their own special talents and appreciate how they are different.
- ✧ To encourage students to be thoughtful and caring.
- ✧ To encourage students to look for the best in everyone.
- ✧ To challenge students to use their imaginations to develop their own holiday stories and songs.

Program Components

- ✧ This teacher's guide that gives suggestions for using the program's worksheets, answer keys, and follow-up activities to extend the learning.
- ✧ Four reproducible student worksheets.
- ✧ An **Elf** growth-chart wall poster for your classroom.
- ✧ A reply card for your comments. Please return this card to remain eligible to receive free LearningWorks programs in the future.

Using the Program Components

- ✧ Photocopy the enclosed activity sheets to provide a complete set for each student. Make a master copy of the teacher's guide and activity sheets to share with other teachers in your school.
- ✧ Display the poster in your classroom to generate interest in the

film, and to use as a starting point for Activity 1.

Activity 1

Discover Your Inner ELF

Objective:

- ✧ To help students discover some of their own special talents – their inner ELF – using their math and art talents.

Use the growth-chart poster to introduce this activity by initiating a discussion about appreciating differences and finding something good in ourselves that makes us stand out. Talk about elves, focusing on their height, and comparing it to the height of humans. How might an elf feel if he/she were a member of the class? Why? How might a child feel among a group of elves? Why? How would an adult feel? Why?



Explain that Buddy, the star of the movie **Elf**, feels he is different and doesn't fit in with the elves because of his size. Then Buddy learns that he is not really an elf but a human, so he leaves to find his real family. During his trip he finds that he has

something else that makes him stand out among humans – a talent for finding the good in everyone and helping them to see it too.

Distribute copies of Activity 1, read the introduction together and direct students' attention to Part 1. Instruct students to do the addition and subtraction problems to find the color of each piece of elf clothing. They should look up each answer in

the color key to find the colors.

In Part 2 of the activity, help students to determine their talents. Have students work individually to draw a picture showing their talents in action.

Answers:

Elf 1

Hat	$2 + 5 = 7$ (red)
Jacket	$7 + 1 = 8$ (green)
Belt	$1 + 6 = 7$ (red)
Tights	$5 + 4 = 9$ (yellow)
Left Shoe	$10 + 0 = 10$ (black)
Right Shoe	$8 - 1 = 7$ (red)

Elf 2

Hat	$3 + 4 = 7$ (red)
Jacket	$10 - 2 = 8$ (green)
Belt	$5 + 5 = 10$ (black)
Tights	$7 + 2 = 9$ (yellow)
Left Shoe	$1 + 9 = 10$ (black)
Right Shoe	$5 + 2 = 7$ (red)

Elf 3

Hat	$9 - 2 = 7$ (red)
Jacket	$3 + 5 = 8$ (green)
Belt	$6 + 4 = 10$ (black)
Tights	$6 + 3 = 9$ (yellow)
Left Shoe	$10 - 0 = 10$ (black)
Right Shoe	$6 + 1 = 7$ (red)

Elf 1 is different. His belt is red instead of black like the others.

Follow-up Activities

1. Encourage your students to share their pictures, explaining what their talents are and how their drawings show them. Collect the pictures and create a Classroom Talent Book. Students can take turns signing the book out to take home and share with their families.
2. Invite students to examine the images they have of certain things. Ask them to describe an elf. (Common traits might be small size, special clothes – pointed hats and shoes, green outfits, etc.) Then ask what elves do. (Students might say repair shoes, work in Santa’s workshop, do work for people.) Point out that all these activities have some-

thing in common – they help people. Should their looks, their height, or the clothes elves wear matter then?

Activity 2 Make Today a Holiday

Objective:

✿ To help students enter into the spirit of the holiday season.

Introduce this activity by sharing some background from the movie with students. Buddy decides to go home to New York. Upon his arrival Buddy becomes sad because he doesn’t seem to fit in there either. Buddy discovers, however, that by treating every day like Christmas, he can find and spread joy in life -- even though he might feel out of place.

Distribute copies of Activity 2 and direct students’ attention to the maze in Part 1. Students trace Buddy’s trip from the North Pole to New York City collecting letter clues along the way to spell out a message.

In Part 2, guide students through the directions for making origami “elf” ornaments, which students can give out as “every day’s a holiday” gifts.

Answers:

Buddy’s message is Happy Holidays.

Art Project Directions

Materials:

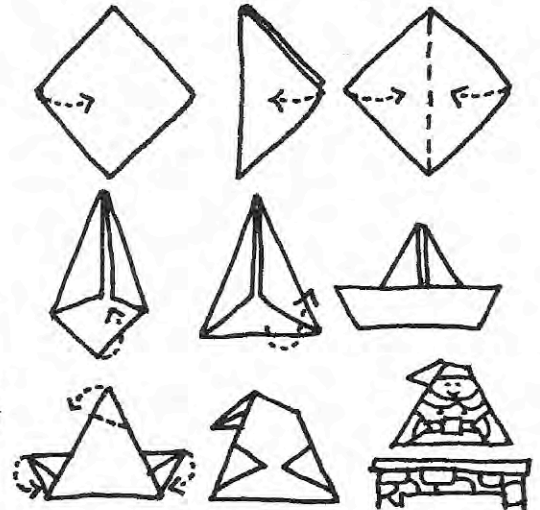
- ✿ a 6” square piece of white paper
- ✿ markers and crayons

Directions:

1. Position the square paper with points up and down.
2. Fold the paper in half by bringing the left point over onto the right point.
3. Unfold and flatten the paper. You

now have a crease marking the center line.

4. Fold the left and right points in and down so that the upper left and right edges of the paper line up with the center crease, creating a long point at the top.
5. Fold the bottom point up to the



center, then fold the bottom up again to make a shape that looks like a paper boat.

6. Turn the paper over.
7. Fold in the two points sticking out at the bottom to make the elf’s arms.
8. Fold the top point back at an angle to make the elf’s hat.
9. Color in a face and clothes to finish your holiday elf.

Follow-up Activities

1. Invite students to consider a journey they have been on. It could be an actual journey, such as a move from another place, or a “symbolic” journey, such as learning something at school or becoming good at soccer. Have students talk or write (based on students’ abilities) about their own journeys.
2. Encourage students to make “elf” ornaments for special people who may not get many special gifts, such as your school custodian, their mail carriers, etc. You might enlist the aid of your media specialist or art teacher to find books about origami and lead students through the making of other origami ornaments.

Activity 3

Who's on Your Nice List?

Objectives:

- ✿ To encourage students to look for the best in everyone.
- ✿ To encourage students to find simple ways to show others they care.



Introduce this activity by asking students to name one person they think is nice and why. Explain that in the movie **Elf**, Buddy looks for the nice in everyone and tries to be nice to everyone. Tell students that today they are going to make their own Nice List.

Distribute copies of Activity 3 and direct students' attention to Part 1. Help students fill in their own personal Nice Lists with names in column one and a "gift of niceness" for each person – a hug, a helping hand, nice words – in column two.

In Part 2, students color and cut out a special "You're On My Nice List" gift certificate, which they can use to deliver a gift of niceness to someone on the list.

Follow-up Activities

1. Create a Nice List bulletin board. The focal point can be the outline of an evergreen tree on which students tack nice gift ornaments.

For ornaments, use cut-outs of various holiday objects, such as a stocking, a candle, and a star. Write the name of each student in your class on one of



the ornaments. Students then take turns drawing the ornaments from a bag and write on the back what their gift to that student will be. When students are ready to give their gifts (help cleaning a desk, read a story, give computer time, etc.) they place the ornament on the student's desk. The gift is given and the ornament goes on the tree.

2. Encourage students to create a stockpile of niceness gift certificates for their own use or to keep in the classroom. So whenever the urge to give a gift of niceness occurs, students will be prepared.

Activity 4

Let's Hear that Holiday Cheer!

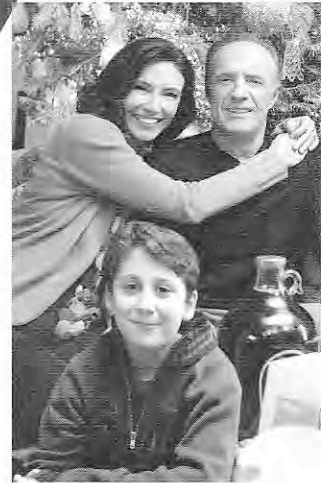
Objectives:

- ✿ To encourage students to write stories about their holiday experiences or thoughts.
- ✿ To motivate students to share in the holiday spirit by singing loud and clear.

Introduce this activity by asking students to share their favorite holiday stories and songs and the feelings they inspire.

Distribute Activity 4 and read the

introduction together. Then direct students' attention to Part 1 where they make a list of holiday words. You might want to do this as a class and write the words on the chalkboard or white board for students to copy. Students can then use the words to tell their



stories to the class, or the class can work together to create a holiday story together. Provide time and materials

for students to turn their stories into storybooks they can take home.

In Part 2, students sing a favorite holiday song, then learn how to make up songs of their own by singing a special **Elf** song to the tune of "Twinkle, Twinkle, Little Star."

Follow-up Activities

1. Create a fun, round-robin-like holiday story. On large chart paper, write an introductory sentence about the holidays. Have each student use his/her word list to add a sentence to the story. Leave space for students to add artwork to go with their sentences.
2. Take a poll of your students' favorite holiday songs. Record the information in a table format and use it to create a graph so students can easily see which songs are the favorites. Discuss with students why they think those songs are so popular.