

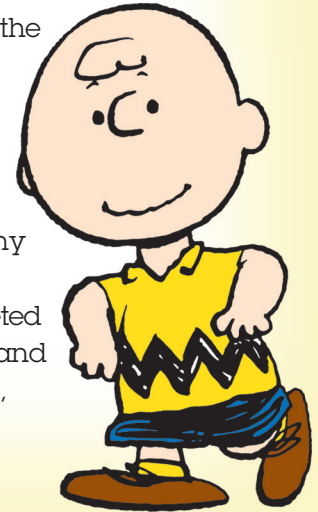


For Whom the Polls Toll

Dear Parent/Guardian:

Please take time to complete this activity sheet with your child. We've been learning about the election process and the current presidential election in class, using Charles Schulz's classic Peanuts story, ***You're Not Elected, Charlie Brown***, to add some extra interest and fun. In this story—which is available on DVD from Warner Home Video—Linus runs for student body president. Despite some outrageous campaign promises and a serious stumble along the way, he squeaks out a victory—and we are left to wonder if the best candidate won after all.

In this activity, you and your child will think about issues like the environment and education and record the positions of the candidates in the shaded columns in the chart below. Add any other issues that concern you. Please return the activity sheet to school with your child with the shaded columns complete.

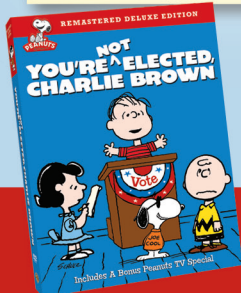


In class your child will then decide which candidate they agree with and write the candidate's name in the last column. If he/she doesn't agree with any candidate's position, they will describe their position in the column. We will use the completed charts in class to analyze these major issues and the positions of the candidates. And, of course, we will conduct our own mock presidential election in class!

Where We Stand

The Issues	_____ 's Position	_____ 's Position	Whose position do you agree with?
The Environment			
Education			

Be sure to complete the shaded columns and have your child bring the chart back to class.



Now compare the positions the Peanuts characters have taken in this year's election by visiting the "Vote for President" website at www.peanutsrocksthevote.com.



Watch ***You're Not Elected, Charlie Brown***, available on DVD, as you count down to the 2016 presidential election on November 8th.