

★ ★ ★ ★ ★  
**ACTIVITY**  
**TWO**  
 ★ ★ ★ ★ ★

# For Whom the Polls Toll

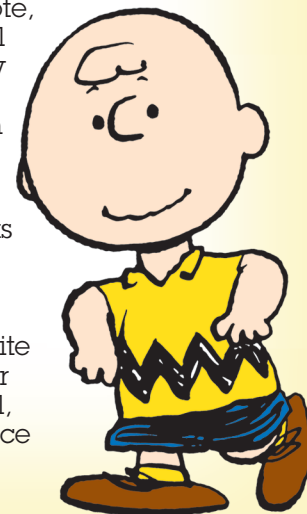
## Dear Parent/Guardian:

Please take time to complete this activity sheet with your child. We've been learning about the election process and the current presidential election in class, using Charles Schulz's classic Peanuts story, ***You're Not Elected, Charlie Brown***, to add some extra interest and fun. In this story—which is available on DVD from Warner Home Video—Linus runs for student body president. Despite some outrageous campaign promises and a serious stumble along the way, he squeaks out a victory—but only by a single vote—and we are left to wonder if the best candidate won after all.

We've also been talking about the importance of voting. In the DVD, Linus wins the election by just one vote. In class, we discussed why it's important for everyone to vote, because one vote can make a huge difference. We talked about how even though students are too young to vote, their parents are not, and how it's important that adults be registered to vote well before the election on November 8th to help set an example for children to follow as they grow up. Children are naturally fascinated by the election process, and we encourage you to involve your child in the election to the extent that you feel comfortable.



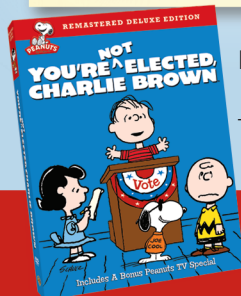
One fun way to let your child participate in an election is to help him or her research the Peanuts "candidates" from the DVD and then fill in the chart below. You can learn more about the characters and their campaign promises by visiting the Peanuts "Vote for President" website at [www.peanutsrocksthevote.com](http://www.peanutsrocksthevote.com). Help your child fill in the chart and then return it to school, where we will compile the results and announce the winner!



## Where We Stand

Peanuts Character	Character Traits	Campaign Promises	Whose position do you agree with?
Linus	kind, good friend	Hold bake sales to fix playground equipment.	

Be sure to complete the shaded columns and have your child bring the chart back to class.



Based on the information in the chart, which candidate would your family vote for?



Watch ***You're Not Elected, Charlie Brown***, available on DVD, as you count down to the 2016 presidential election on November 8th.