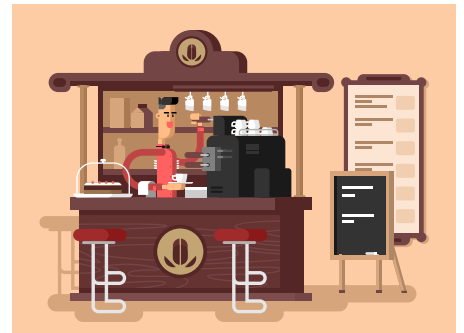


The Complete Package

Part A.

There are a lot of “green” issues to consider when schools, restaurants, and companies decide about the types of foodservice packaging they are going to use. After watching “Our Take on Take-Out Packaging,” read and answer the questions.

1. A coffee shop attracts customers by saying they are saving the environment by using reusable plates and cups. At the end of each day, they use a lot of energy and water to wash and dry the dishes. Are they really “saving the environment”? Why or why not? _____



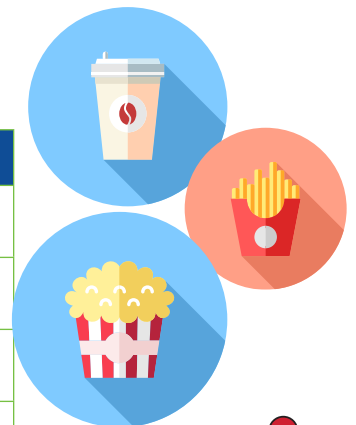
2. A day care center decides to start serving lunch to its students each day. It has a kitchen, but no dishwasher, and can only afford to pay one person to run the entire lunch program. The center decides to purchase recyclable paper plates and cups to use for the lunch program. Do you think this is a good decision? Why or why not? _____



Part B.

Think about what you learned about foodservice packaging from your teacher and the videos. What are the pros and cons of using foodservice packaging? Hint: Consider the cost, sanitary concerns, convenience, impact on the environment, etc. Write your thoughts below:

Pros:	Cons:



FOODSERVICE PACKAGING INSTITUTE®



Learn more about foodservice packaging at www.fpi.org