



PREHISTORIC PLANET 2

Dear Educator,

Dinosaurs are roaring back to Apple TV+ with a spectacular new season of **Prehistoric Planet** — a five-night event beginning May 22 featuring new dinosaurs, new habitats, and new adventures! Be sure your students are ready for another journey 66 million years into the past with these free classroom activities.

Created for grades 1-6 by the curriculum specialists at Young Minds Inspired in partnership with Apple TV+, these new activities challenge students to use core learning skills as they explore the rulers of the Cretaceous period. They use math skills to calculate the size of *Tarchia*, decoding skills to uncover facts about ankylosaurids, and more. All the activities are easy-to-implement and standards-based to support your STEAM and ELA curricula.

We hope that you will share this program with other teachers and tune in to watch **Prehistoric Planet** exclusively on Apple TV+. Please let us know your thoughts on this program at [ymiclassroom.com/feedback-prehistoricplanet](https://www.yomiclassroom.com/feedback-prehistoricplanet). We look forward to hearing from you.

Sincerely,

Dr. Dominic Kinsley
Editor in Chief
Young Minds Inspired



Questions? Contact YMI toll-free at 1-800-859-8005 or by email at feedback@ymiclassroom.com.

About Prehistoric Planet

From May 22–26, Apple TV+ will premier Season 2 of the groundbreaking series **Prehistoric Planet**. Narrated by David Attenborough and scored by Hans Zimmer, the second season of **Prehistoric Planet** invites you to experience the wonders of our world like never before in this epic series from Jon Favreau and the producers of **Planet Earth**. Travel back 66 million years to when majestic dinosaurs and extraordinary creatures roamed the lands, seas, and skies.

Target Audience

Students in grades 1-6

Program Components

- This one-page teacher's guide with directions for all grades
- Two activity sheets for grades 1-2
- Two activity sheets for grades 3-6
- An episode guide for Season 2 of **Prehistoric Planet**

Also visit [ymiclassroom.com/prehistoricplanet](https://www.yomiclassroom.com/prehistoricplanet) for Season 1 teaching materials, education standards, and an online feedback form.

GRADES 1–2 ACTIVITIES

Activity 1

A-Maze-ing *Tarchia*

Introduce students to the massive size of dinosaurs by measuring out 22 feet of yarn or string. Explain that 22 feet is the approximate length of a type of dinosaur called *Tarchia*. Have students work together to hold the 22-foot-long string taut as they move around the playground. Also have students measure distances in the school that are 22 feet apart if possible. As students move and measure, discuss any challenges they have moving around without letting the string sag and what it might have been like to be a 22-foot-long animal!

Back in class, distribute the activity sheet and allow students to work with partners to complete the maze and unscramble the words to discover some fun facts about *Tarchia*. Discuss the answers as a class.

Answers: 1. cool; 2. eyelids; 3. skull; 4. brainy; 5. club; 6. tail



Activity 2 Prehistoric Puzzle

Begin the activity by reading the *Tarchia* Fun Facts shown below. Have students act out the facts, for example, by blinking their eyes to represent *Tarchia*'s eyelids or holding their hands together and swishing their arms from side to side like *Tarchia*'s large, strong tail. For more fun, encourage students to make up a silly dino dance with the motions.

Next have students color the *Tarchia* on the activity sheet. Then have them cut the image on the dotted lines to create puzzle pieces and exchange their pieces with another student to put the picture back together. For fun, they might also see what *Tarchia* looks like when assembled with pieces from different puzzles (something like assembling a dinosaur skeleton with pieces from different places).

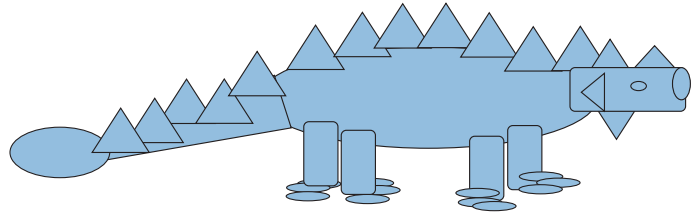
TARCHIA FUN FACTS

- *Tarchia* was the largest Asian ankylosaurid. It was about 22 feet long. But *Tarchia* was not the biggest ankylosaurid. That title goes to *Ankylosaurus magniventris* of North America, which could be 30 feet long.
- *Tarchia* was named after its brain. In fact, *Tarchia* means "the brainy one". Compared to the size of its head, it had the largest brain of the Asian ankylosaurids.
- *Tarchia* had an impressive, armored head. The broad skull was covered with bony projections and horns. Shutter-like bony eyelids protected its eyes.
- *Tarchia*'s tail had a large, rounded, bony club on the end. Massive muscles anchored the tail. The tail gave crushingly powerful and rapid swipes side to side.
- As a desert-dweller, this ankylosaur had to stay cool. *Tarchia* had a huge nose packed full of unusually long nasal passages. The passages acted like an air-conditioner to keep its brain cool.

GRADES 3–6 ACTIVITIES

Activity 1 Draw-a-dino: *Tarchia*

Begin the activity by asking students to draw a picture of a dinosaur they know. After students share their pictures, introduce *Tarchia* by drawing a picture based on the step-by-step directions included on the activity sheet as the students read them aloud. Have students compare this shape to shapes of more familiar dinosaurs. Next, have students draw their own *Tarchia* using the activity sheet directions and separate sheets of drawing paper.



Finally, have students decode a fact about *Tarchia* by solving basic math facts to create a key. For added fun, students can encode new facts about *Tarchia* that they learn by watching **Prehistoric Planet** and challenge one another to solve their puzzles. **Code Answer:** "the brainy one"

Activity 2 Digging for Words: Speed Round

Begin the activity with a quick game of charades with students taking turns to act out unique features of *Tarchia* (e.g., large bony tail, bony eyelids) while the other students guess each detail using the information and images on the activity sheet.

Next, students will work in teams to see how many words they can make from the words *Ankylosaurus* and *Tarchia* in two minutes. When they finish, students will share their words to find the class winner.

Resources

Prehistoric Planet: apple.co/PrehistoricPlanet

YMI program site: ymiclassroom.com/prehistoricplanet



A-Maze-ing *Tarchia*



Tarchia was a giant of a dinosaur. Solve the maze by finding your way from head to tail through this massive animal. Then learn more about *Tarchia* by solving the clues.

Draw a line through the maze on the image of *Tarchia* to reach the tail.

Decode the scrambled words to learn more about *Tarchia*.

Color the dinosaur.

Share your learning with friends and family!

1

Tarchia's huge nose was full of long nasal passages that worked like an air conditioner to keep its brain **oloc**.

2

Tarchia's eyes were protected by shutter-like **eyields** made of bone.

4

Tarchia means: the "**yrani**b" one. It had the largest brain compared to the size of its head for any dinosaur in its family.

5

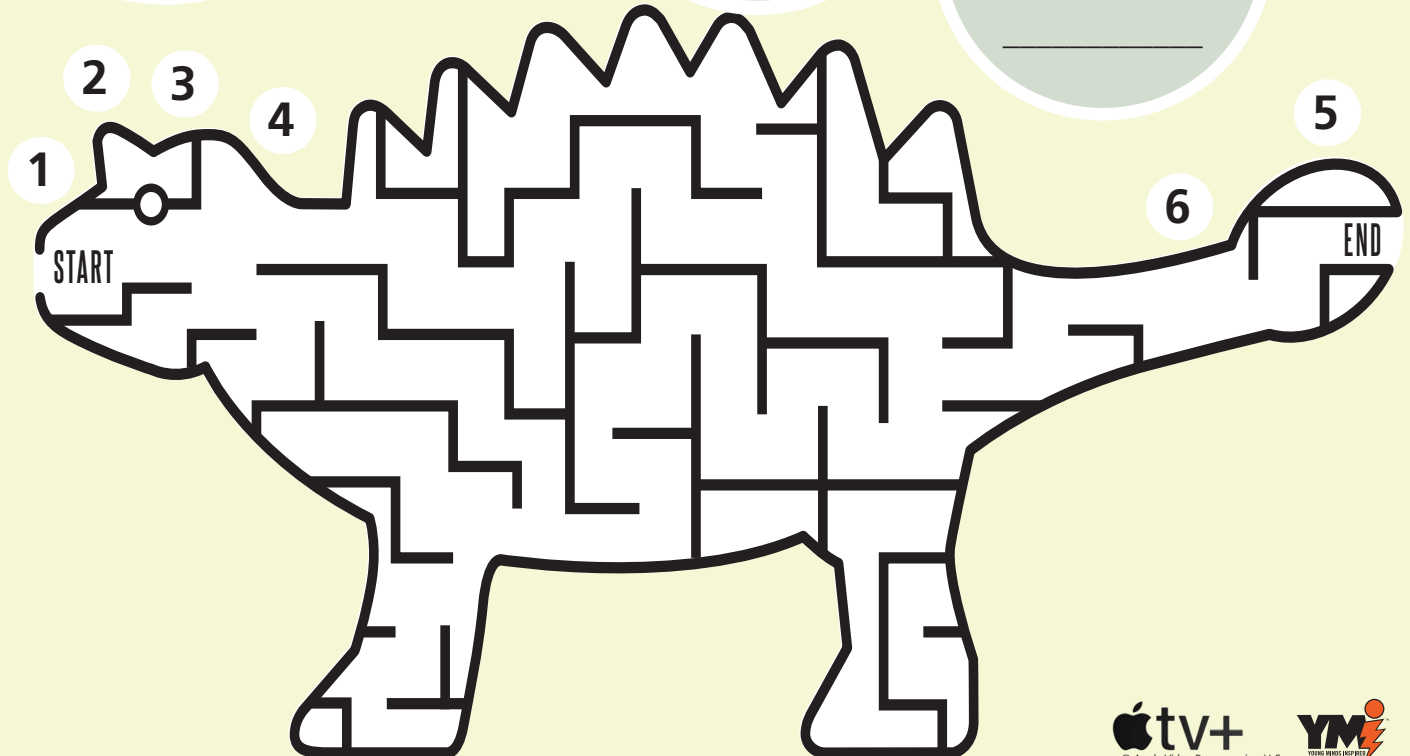
Tarchia's tail had a large, rounded, bony **bclu**.

3

Tarchia had a large **lulsk** with bony horns.

6

It needed massive muscles to swing its **tlai** side to side for protection.



Families: Check out the second season of **Prehistoric Planet**, an epic five-night event on Apple TV+ starting May 22! See your favorite dinosaurs and discover some new ones, like *Tarchia*, as they interact in amazing ways!

Prehistoric Puzzle

Paleontologists put together clues to learn about dinosaurs. It's like solving a puzzle. Make your own prehistoric puzzle of *Tarchia*, Asia's largest ankylosaurid.

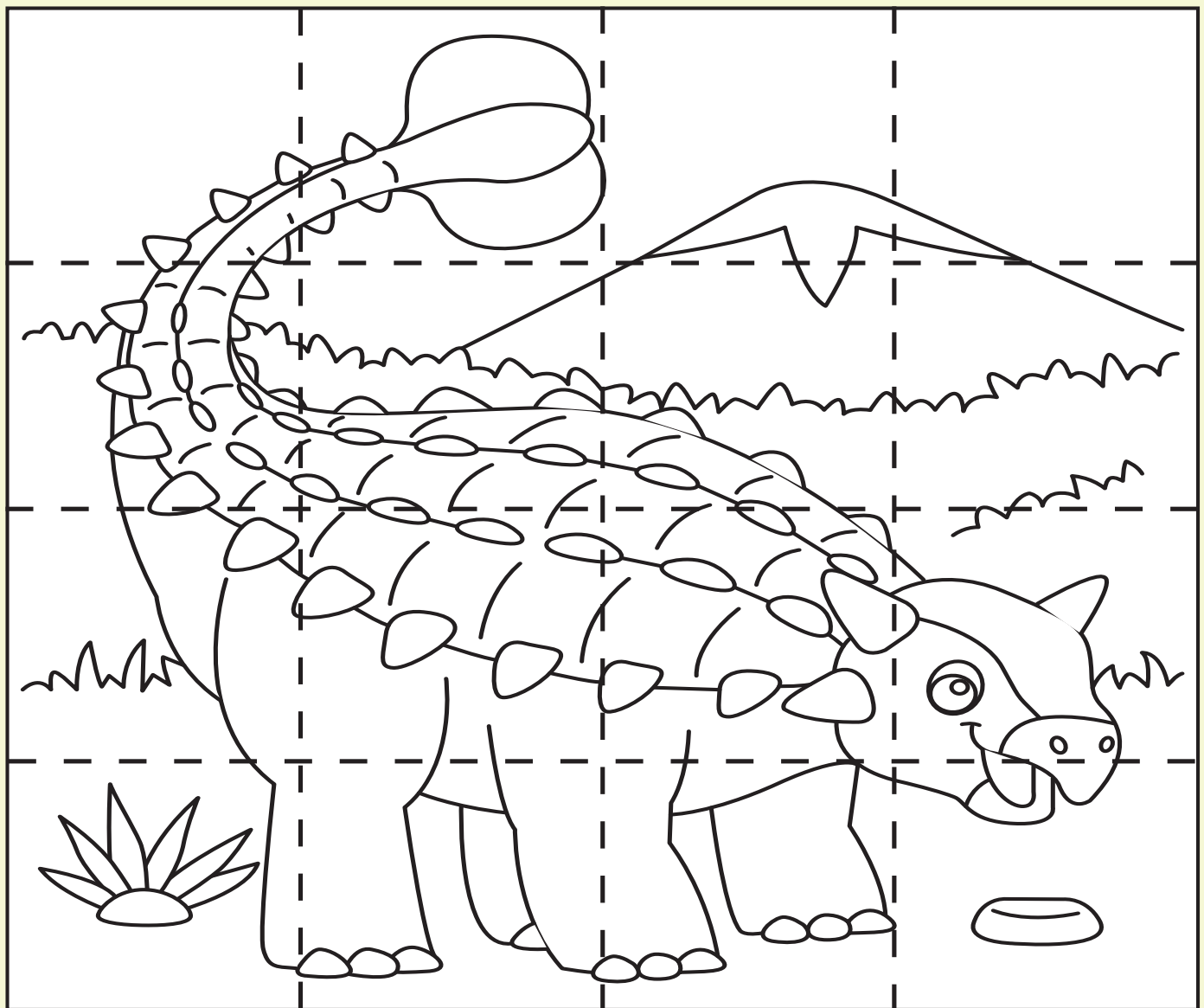
Color the *Tarchia*.

Cut along the dotted lines.

Trade your puzzle pieces with a classmate.

Solve the puzzle.

Share your learning with friends and family!



Families: Check out the second season of **Prehistoric Planet**, an epic five-night event on Apple TV+ starting May 22! See your favorite dinosaurs and discover some new ones, like *Tarchia*, as they interact in amazing ways!

Digging for Words: Speed Round

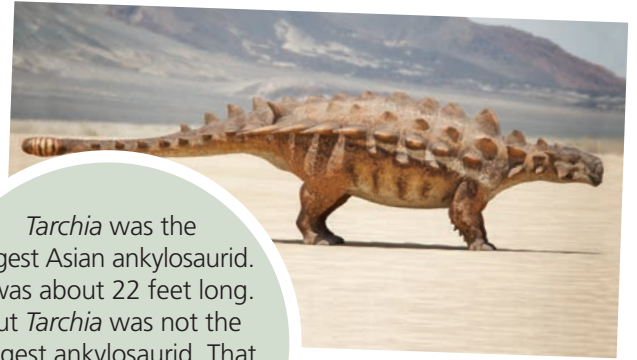
Part 1

Learn fun facts about the ankylosaurid *Tarchia*!

Read the facts.

Talk to your partner. What did you learn?

Compare *Tarchia* to another dinosaur that you know. How are they similar? How are they different?



Tarchia was the largest Asian ankylosaurid. It was about 22 feet long. But *Tarchia* was not the biggest ankylosaurid. That title goes to *Ankylosaurus magniventris* of North America, which could be 30 feet long.



Tarchia had an impressive, armored head. The broad skull was covered with bony projections and horns. Shutter-like bony eyelids protected its eyes.

Tarchia's tail had a large, rounded, bony club on the end. Massive muscles anchored the tail. The tail gave crushingly powerful and rapid swipes side to side.



As a desert-dweller, this ankylosaur had to stay cool. *Tarchia* had a huge nose packed full of unusually long nasal passages. The passages acted like an air-conditioner to keep its brain cool.



Tarchia was named after its brain. Compared to the size of its head, it had the largest brain of the Asian ankylosaurids.



Part 2

Speed round! How many new words can you make with the letters in the following words? Use the back of the sheet if you need more space.

Tarchia

Ankylosaurus

Families: Check out the second season of **Prehistoric Planet**, an epic five-night event on Apple TV+ starting May 22! See your favorite dinosaurs and discover some new ones, like *Tarchia*, as they interact in amazing ways!





PREHISTORIC PLANET 2

EPISODE GUIDE

Beginning May 22, Season 2 of **Prehistoric Planet** goes back 66 million years to the Cretaceous period when flying giants soared in the air, reptiles patrolled the coast, and dinosaurs ruled the land. New discoveries are teaching us more than ever about how these amazing creatures including the little-known *Tarchia* survived, thrived, and interacted in surprising ways. From May 22-26, Apple TV+ is once again bringing **Prehistoric Planet** to life for a five-night event with dazzling graphics, new scientific knowledge, and even music using fossils as instruments — you'll see dinosaurs like never before!

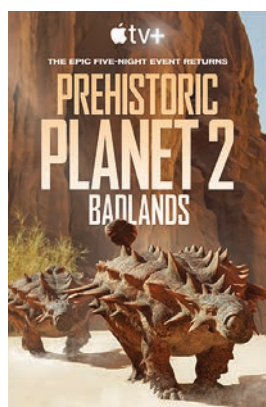
New dinosaurs. New habitats. New season.

The groundbreaking series is back with new dinosaurs and new habitats.



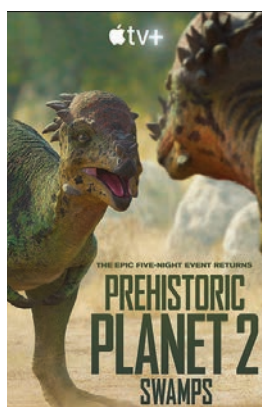
Islands

On a small island, a monumental display takes place as the giant *Hatzegopteryx* reveals his gentler side to woo a mate.



Badlands

Trudging through a scorching desert, two young *Tarchia* find relief at an oasis and encounter an adult twice their size, ready to lay claim.



Swamps

In a drought-stricken basin where much has perished, an old *Pachycephalosaur* bull defends his leadership against a young challenger.



Oceans

Deep beneath the water's surface, the world's largest predator — the *Mosasaurus* — lies in wait to ambush unsuspecting prey.



North America

Not many can intimidate North America's top predator, *T. rex*, whose size and bite are a deadly combo — except for a giant winged foe.



Check out the
Prehistoric Planet
five-night event on
Apple TV+
starting May 22!