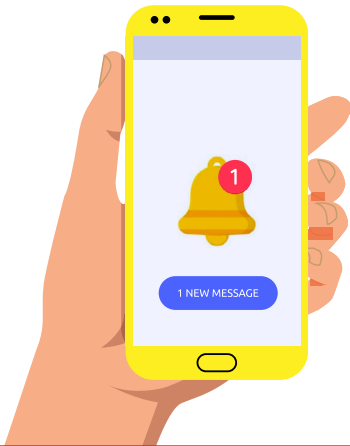


Mission One: A Puzzling Situation



Spies are often presented with puzzling information — like the mysterious text message Ben receives on his phone. He is trying to figure out who sent the message and where he is supposed to meet this person to learn about his next mission. Can you help him? Read the names and places on the chart. Then read the clues below. Place an X in the box if you can rule out a person, place, or both. Fill in the row with Xs when ruling out a place. Fill in the column with Xs to rule out a person. Hint: Start by reading all the clues.

	ERICA	CHIP	ALEXANDER HALE	PROFESSOR CRANDALL	ZOE
Dorm Room					
Principal's Office					
Library					
Dining Hall					
Bushnell Hall					

Clues

1. CIA officers have been standing guard outside Ben's dorm room so no one can enter.
2. Zoe was sitting next to Ben in class and borrowed his pen to take notes in her notebook.
3. The library has been closed due to a power outage.
4. When Chip snuck off campus, he dropped his phone on the sidewalk and Ben picked it up. He still has to return it to Chip.
5. Yesterday, Erica and Ben went to the airport with Alexander Hale, who boarded a plane for a flight to Canada.
6. Professor Crandall was speaking to a few students at the start of his day full of classes in Bushnell Hall when Ben received the text.
7. Ben has been banned from the principal's office.

Crack the Code

The text message contained a secret code about the time to meet during the day. Ben might be a math whiz, but he needs your help to decode the time.

= 8
 = 5
 = 4
 = 3

x + - = _____



Mystery Photo

The text message also contained a mystery photo with this clue: "We might be meeting up close, but you'll need this to see from afar." Which gadget will Ben need to bring for this next mission?

GROWN-UPS:
With over 10 books, the Spy School series offers tons of adventures!

