

Dear Educator,

Blue is every preschooler's best friend! The beloved puppy can be found on *Blue's Clues & You!*, where she and her friend Josh invite children to join them on a playful clue-led learning adventure. The series has won the hearts of children and adults with its dynamic, curriculum driven, interactive programming.

Inspired by Blue and her friends' clue-collecting adventures, this free teaching kit created by Nickelodeon and the curriculum specialists at Young Minds Inspired (YMI) engages children in problem solving and strengthens their developmental learning skills in pre-reading and math. Best of all, children will have fun working together!

We hope that you enjoy this program and share it with other teachers and families at your school. Although the materials are protected by copyright, you may make as many copies as needed for educational purposes. Please let us know your thoughts on this program at ymiclassroom.com/feedback-blues-clues/. We look forward to hearing from you.

Sincerely,


Dr. Dominic Kinsley
Editor in Chief
Young Minds Inspired



Questions? Contact YMI toll-free at 1-800-859-8005 or by email at feedback@ymiclassroom.com.



About *Blue's Clues & You!*

Blue's Clues & You! is an interactive program on Nickelodeon featuring the beloved puppy, Blue. Each day, Blue leaves paw prints on three objects around her house to communicate her answer to the question of the day. Josh, Blue's best friend, looks for and figures out the solution to Blue's clues ... but he can only do that with the viewer's help! With Handy Dandy Notebook ready to record clues, Blue and Josh can solve problems with young viewers while they learn about friendship, teamwork, and curriculum skills like reading and math. Blue and Josh are joined by their friends Magenta, Tickety-Tock, the Felt Friends, Shovel and Pail, Slippery Soap, Mr. Salt and Mrs. Pepper, and their children, Paprika, Cinnamon, Sage, and Ginger.

Target Audience

Children ages 2-6

What Children Will Practice:

- Problem-solving
- Counting
- One-to-one correspondence
- Sorting and matching
- Colors and color words
- Sequencing
- Letter names
- Early reading skills
- Creativity
- Large and fine motor skills

Program Components

Included in this poster guide:

- A wall poster
- This two-page teacher's guide
- Three reproducible activity sheets
- A reproducible parent/caregiver letter
- A reply card for your comments

These program components are also available at ymiclassroom.com/blues-clues, along with additional reproducible activities for school or home, a digital quiz, standards chart, and online feedback form.

How to Use the Program

This program can be used by teachers, parents, and caregivers. Make photocopies of the teacher's guide, activity sheets, and letter before hanging up the wall poster. The activity sheets can be used in class or provided to families to use at home. Also send home the parent/caregiver letter to extend the learning. In class, help children by reading each activity aloud while pointing to each word. Children will need pencils, crayons or markers, and blank paper to complete the activities.

Poster: Let's Think It Through! You Can, Too!

Use the poster as a visual aid and learning tool. Invite the children to look at the poster and ask them the questions. Next, ask the children what steps they take when they have to do something difficult. Use the poster as an inspiration and reminder to children that, "You can do anything you want to do!"

To extend the poster activity, have children:

- Use blocks and manipulatives to represent numbers one to ten and compare which block sets have more and which are less.
- Have children create picture postcards for a friend.
- Brainstorm healthy recipes and have children tell you the directions for making it or create a menu.
- Ask volunteers to name a song each day and dance along as a group.

Activity 1 Let's Skidoo!

Blue loves to skidoo with Josh into the world around them. In this fine-motor skills activity, children will follow a fun path to get to the library, the fire station, and the grocery store. Begin the activity by asking the children where they like to go or what they see in their community. Ask the children what they do when they get to these places. Explain that a community includes the people and places in an area. This includes families, helpers, and people who work in an area, as well as the places, like homes, schools, parks, shops, and other buildings.

Next, distribute the activity sheet and ask the children if they can figure out where Blue and Josh are going by looking at each trail of icons. Have children use their finger, a pencil, or a crayon to trace the paths. When they find where Blue and Josh are going, have them trace the word below the community location and then color and count the number of images in each path.

Continue the conversation about community. Ask children who else lives and works in their community. Make a class chart of places people go and the names of people who work there (i.e., post office/mail carrier, doctor's office/doctor and nurse, etc.).

Activity 2 Friend Favorites

Blue loves to play with her friends, and each friend is unique and special. In this matching activity, children will use their critical-thinking skills to make connections. Begin the activity by asking children to name their favorite book, toy, or game to build connections — volunteer yours as well. Point out the different answers the children share as a way of introducing the concept that we all like different things.

Distribute the activity sheet and read it aloud to the children. Help them talk through what each friend likes. Children will draw a line to connect the matching friends and objects. Review the answers. Explain that Josh loves to play the guitar. Mr. Salt and Mrs. Pepper like to cook. They need bowls, pans, and utensils like spoons to cook. Mailbox loves to bring mail to the friends, and Shovel and Pail like to build sandcastles. Ask the children if they like Blue's friends' favorite activities as well.

Next, ask the class what makes each of them special. Have each student draw something they love or something that makes them unique. Help them write or scribe a caption for their drawing. Then have them share to get to know each other better. Display the pictures in the classroom or make a class book for children to read together.

Activity 3 Let's Play Blue's Clues!

Blue does not talk, so she made up a game called Blue's Clues to help her friends figure out what she wants to do. She leaves paw prints on her clues. In this activity, the children will figure out one of Blue's clue-ventures and then make their own dance patterns to express themselves creatively and develop large motor skills. Start the activity by asking children what they like to play at home and school. Make a class chart of favorite activities (i.e., Juan loves blocks) with a quick drawing so children can read the chart later.

Next, distribute the activity sheet. Remind the children that Blue leaves paw prints on things to help her friends figure out what she wants to do. Look at the clues together. Ask the children to identify each of the three clues. Have the children act out the three clues. Then ask them what they think Blue wants to do. Read the answer together and have the children trace the letters for the word "dance."

Use the activity to have your own dance party. Ask children to volunteer a number from one to five. Then they choose what the class does (i.e., five twirls, three jumps). Visit the *Blue's Clues & You!* YouTube channel to turn on some fun *Blue's Clues* songs or other preschool music for children to make up their own dance routines with Blue's fun movements: www.youtube.com/bluesclues. Use the activity to reinforce patterns by saying or showing a series of moves and having the children identify which comes next.

Check Out Blue's Digital Quiz!

Your students can test their knowledge on a clue-collecting adventure with an interactive quiz at ymiclassroom.com/blues-clues.

Resources

nickjr.com
nickjr.com/blues-clues
youtube.com/nickjr
ymiclassroom.com/blues-clues



Visit the Nick Jr. Friends Site!

You can find more activities and resources inspired by your preschoolers' favorite Nick Jr. characters and shows, including *Santiago of the Seas* and *Baby Shark's Big Show!*, at ymiclassroom.com/nickjr.

**Blue's
Clues
& You!** **nickelodeon**

© 2022 Viacom International Inc. All Rights Reserved. Nickelodeon, Blue's Clues & You and all related titles, logos and characters are trademarks of Viacom International Inc.

Let's Skidoo!

Jump in with Josh and Blue! There are many places in their community that they like to go. Can you figure out where they are going? Follow the paths to find out!

Look at the picture pathways.

Trace each path of pictures.

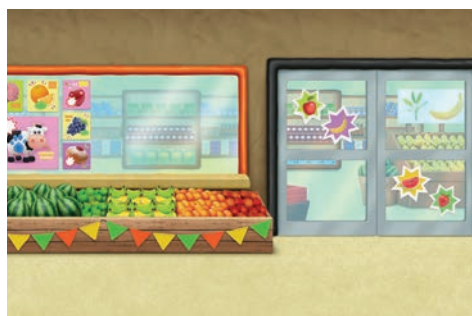
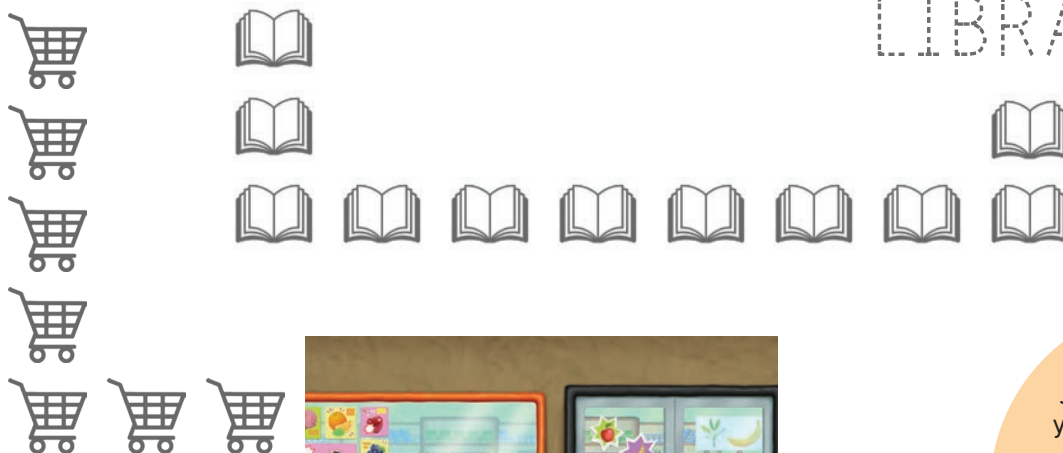
Name the place where each path ends.



FIRE STATION



LIBRARY



GROCERY STORE

"Will you help us?
You sure are
smart!"



Families: Join Blue, Josh, and friends with your little ones, as they explore learning, friendship, and fun! Tune in to *Blue's Clues & You!* weekday mornings on Nickelodeon or stream anytime on Paramount+.



nickelodeon

© 2022 Viacom International Inc. All Rights Reserved. Nickelodeon, Blue's Clues & You and all related titles, logos and characters are trademarks of Viacom International Inc.

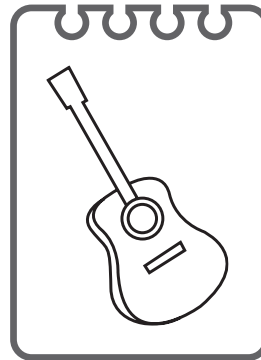
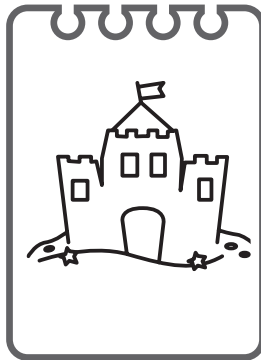
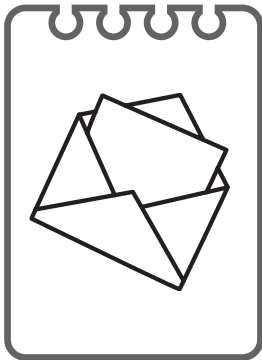


Friend Favorites

Blue loves to play with her friends! Each friend is special.
Each friend has a favorite thing to do.

Look at the pictures.

Draw a line from each friend to what they like to do.



Families: Join Blue, Josh, and friends with your little ones, as they explore learning, friendship, and fun! Tune in to *Blue's Clues & You!* weekday mornings on Nickelodeon or stream anytime on Paramount+.

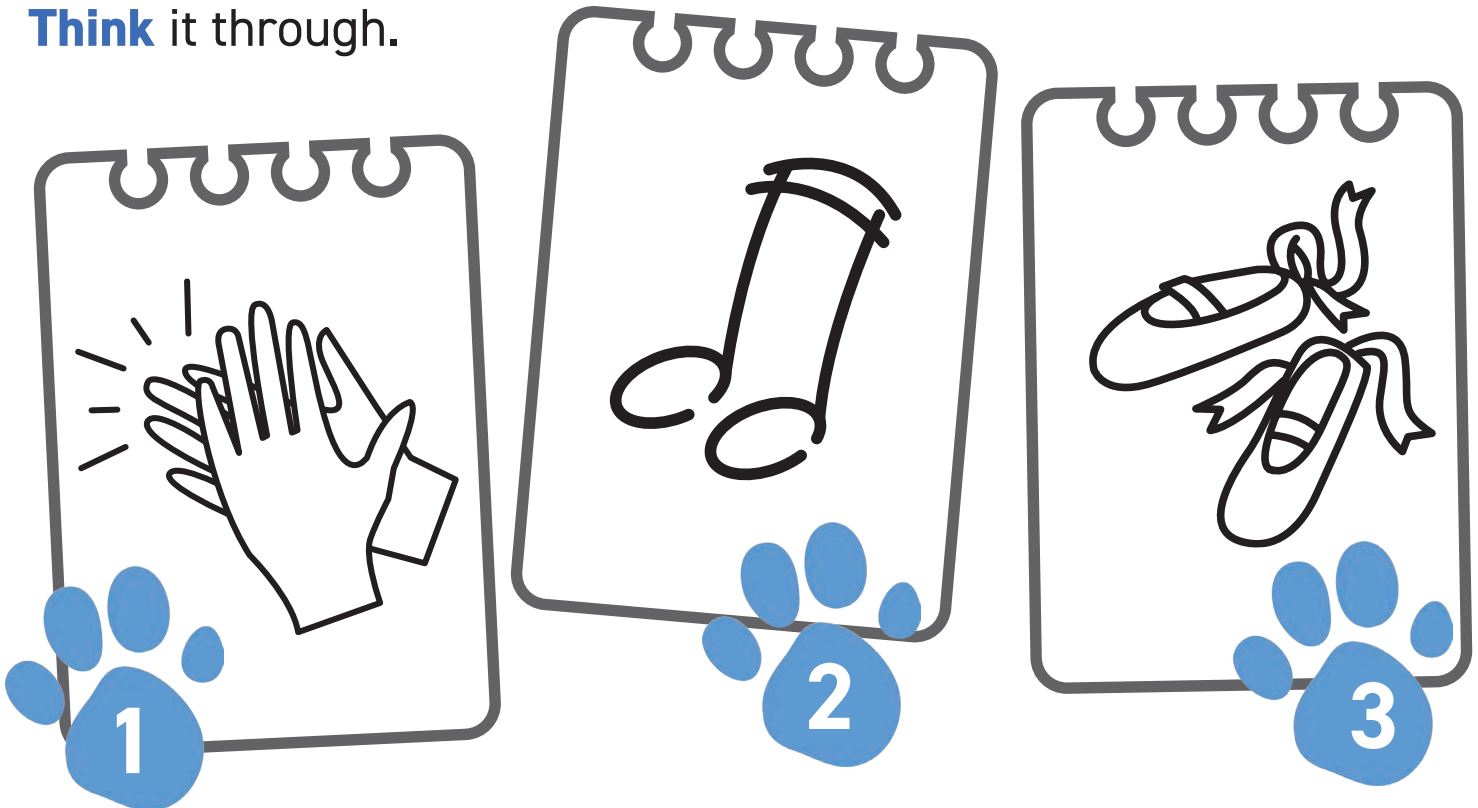
What's your favorite thing to do?
Draw a picture here!



Let's Play Blue's Clues!

Blue wants to play with her friends.
What does she want to do? Can you figure out the clues?

Look at the clues.
Think it through.



Thanks for your help! Blue wants to DANCE!

Clap your hands, sing a tune,
and move your feet to make
your own dance!

Families: Join Blue, Josh, and friends with your little ones, as they explore learning, friendship, and fun! Tune in to *Blue's Clues & You!* weekday mornings on Nickelodeon or stream anytime on Paramount+.



nickelodeon



© 2022 Viacom International Inc. All Rights Reserved. Nickelodeon, Blue's Clues & You and all related titles, logos and characters are trademarks of Viacom International Inc.

Dear Parents and Caregivers,



Blue is every preschooler's best friend! The beloved puppy can be found on *Blue's Clues & You!*, where she and her best friend Josh invite children to join them on a playful clue-led learning adventure. The series has won the hearts of children and adults with its dynamic, curriculum driven, interactive programming.

In school, your child has been learning about friendship and practicing social and developmental learning skills such as pre-reading and math with a program inspired by *Blue's Clues & You!* from Nickelodeon and the education specialists at Young Minds Inspired.

You can continue the learning at home by tuning in to *Blue's Clues & You!* weekday mornings on Nickelodeon or stream anytime on Paramount+ for problem-solving fun with friends. Talk with your child after the show. What parts did they like best? How did the friends solve their problems? Together, try some of these fun family activities:

- **Josh often uses American Sign Language.** Learn some American Sign Language with Josh and Blue on the *Blue's Clues & You!* YouTube Channel at www.youtube.com/watch?v=LzqfTmG-ao, then practice using the signs with your family.
- **Sometimes Josh and Blue use their phone to video chat with people they like.** Call or video chat with a relative or friend who may be far away or an older relative who could use a visit.
- **Josh loves to sing and play his guitar.** Make up silly lyrics to a familiar song like "Wheels on the Bus." For example, "the birds in the sky say, looks like rain." Or "the feet on the sidewalk run to school."
- **Play your own clue-ventures.** Identify three items that represent an activity your family will be doing, a meal you want to eat, or a place you want to go and have your child figure it out.

And check out [ymiclassroom.com/nickjr](https://www.ymiclassroom.com/nickjr) for more fun activities and resources featuring some of your child's favorite Nick Jr. characters and series.

About Blue's Clues & You!

Blue's Clues & You! is an interactive program on Nickelodeon featuring the beloved puppy, Blue. Each day, Blue leaves paw prints on three objects around her house to communicate her answer to the question of the day. Josh, Blue's best friend, looks for and figures out the solution to Blue's clues ... but he can only do that with the viewer's help! With Handy Dandy Notebook ready to record clues, Blue and Josh can solve problems with young viewers while they learn about friendship, teamwork, and skills like reading and math. Blue and Josh are joined by their friends Magenta, Tickety-Tock, the Felt Friends, Shovel and Pail, Slippery Soap, Mr. Salt and Mrs. Pepper, and their children, Paprika, Cinnamon, Sage, and Ginger.

This November, *Blue's Clues & You!* debuts its very first feature length film, ***Blue's Big City Adventure***, exclusively on Paramount+. With all-new original songs and choreography, the brand-new movie is a musical spectacular for the whole family!



Estimados padres y educadores:



¡Blue es la mejor amiga de los niños de edad preescolar! La adorable perrita es la protagonista de *Blue's Clues & You!*, donde ella y su mejor amigo Josh invitan a los niños a unirse a ellos en una divertida aventura de aprendizaje guiada por pistas. La serie se ha ganado el corazón de niños y adultos con su programación dinámica e interactiva basada en un plan de estudios.

En la escuela, su hijo/a ha estado aprendiendo cosas sobre la amistad y ha practicado habilidades sociales y de aprendizaje como la prelectura y las matemáticas, con un programa inspirado en *Blue's Clues & You!* de Nickelodeon y los especialistas en educación infantil de Young Minds Inspired.

Su hijo/a puede seguir aprendiendo en casa sintonizando *Blue's Clues & You!* todas las mañanas de lunes a viernes en Nickelodeon o mediante streaming en cualquier momento en Paramount+ para divertirse resolviendo problemas con amigos. Después del programa, conversa con tu hijo/a. ¿Qué partes del programa le gustaron más? ¿Cómo solucionaron los amigos sus problemas? Prueben juntos algunas de estas actividades divertidas en familia:

- **Josh suele usar Lenguaje de Señas Americano.** Aprendan un poco de la del Lenguaje de Señas Americano con Josh y Blue en el canal de YouTube de *Blue's Clues & You!* en www.youtube.com/watch?v=LzqfTmG-ao, y luego practiquen el uso de señas con su familia.
- **A veces Josh y Blue usan el teléfono para hacer videollamadas con personas de su agrado.** Llamen o hagan una videollamada con un familiar o amigo que esté lejos o un a familiar mayor a quién le encantaría una visita.
- **A Josh le encanta cantar y tocar la guitarra.** Inventen letras para una canción conocida como "Wheels on the Bus". Por ejemplo, "los pájaros en el cielo dicen, parece que va a llover". O "los pies en la acera corren hacia la escuela".
- **Prueben con sus propias pistas.** Identifiquen tres elementos que representen una actividad que puedan hacer en familia, una comida que desean comer o a un lugar que quieran visitar para que su hijo lo descubra.

Visiten ymiclassroom.com/nickjr para ver más actividades y otros recursos divertidos con algunas de las series y personajes favoritos de Nick Jr. de su hijo.

Sobre Blue's Clues & You!

Blue's Clues & You! es un programa interactivo de Nickelodeon protagonizado por la adorable perrita Blue. Cada día, Blue deja sus huellas en tres objetos de su casa para comunicar su respuesta a la pregunta del día. Josh, el mejor amigo de Blue, busca y averigua la solución gracias a las pistas de Blue... ¡pero sólo puede hacerlo con la ayuda los espectadores! Con la libreta Handy Dandy lista para apuntar las pistas, Blue y Josh logran resolver problemas con los pequeños espectadores mientras aprenden sobre la amistad, el trabajo en equipo y habilidades como la lectura y las matemáticas. A Blue y Josh les acompañan sus amigos Magenta, Tickety Tock, los Felt Friends, Shovel y Pail, Slippery Soap, Mr. Salt y Mrs. Pepper, y sus hijos Paprika, Cinnamon, Sage, y Ginger.

Este mes de noviembre, *Blue's Clues & You!* estrena su primer largometraje, **La Aventura de Blue en la Gran Ciudad**, exclusivamente en Paramount+. La película, que cuenta con nuevas canciones y coreografías originales, es un espectáculo musical para toda la familia.



nickelodeon



© 2022 Viacom International Inc. Reservados todos los derechos. Nickelodeon, Blue's Clues & You y todos los títulos, logotipos y personajes relacionados son marcas de Viacom International Inc.