

WISCONSIN DAIRY BREEDS

Holstein

black and white; came from Holland in 1621



Milk comes from dairy cows. In Wisconsin, there are seven main breeds of dairy cows. Most dairy cows in Wisconsin are Holsteins. One way to tell the breed of a dairy cow is by its color. Which breeds have you seen before?

Red & White Holstein

red and white; came from Holland



Brown Swiss

solid brown, varying from very light to dark; came from Switzerland in 1869



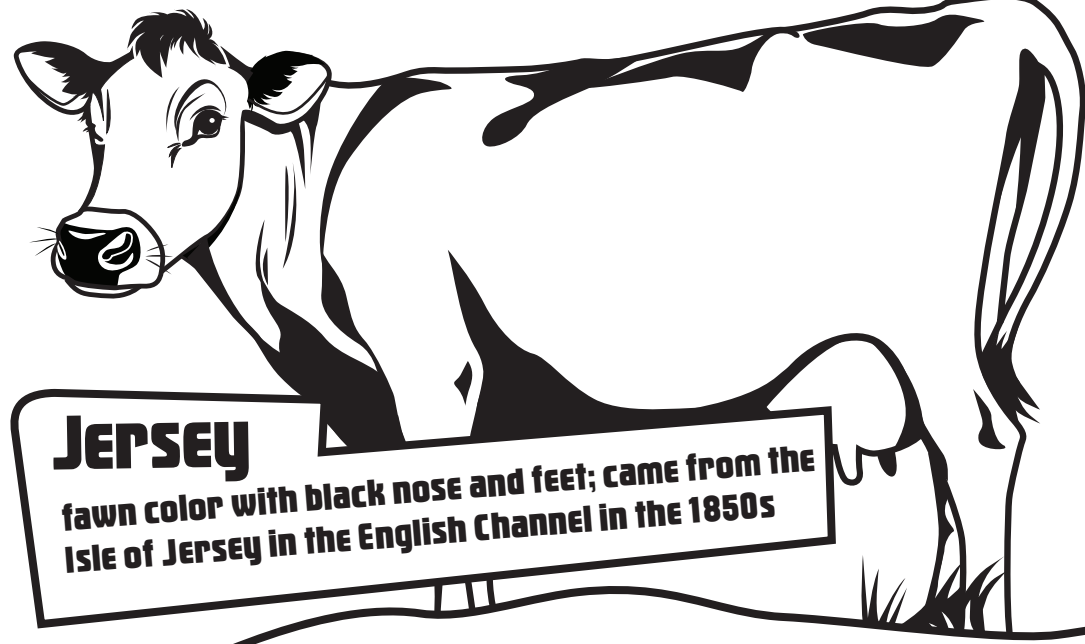
Milking Shorthorn

reddish-brown with small white spots; came from Northeastern England in 1783



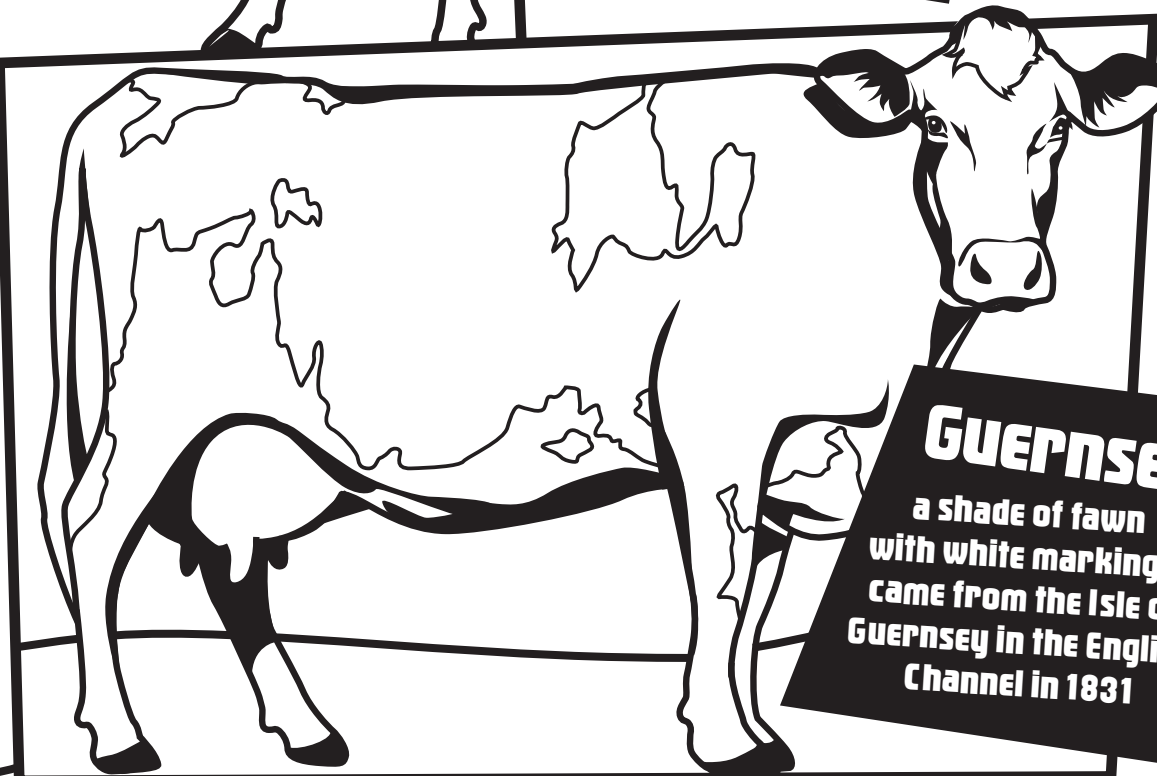
Jersey

fawn color with black nose and feet; came from the Isle of Jersey in the English Channel in the 1850s



GUERNSEY

a shade of fawn with white markings; came from the Isle of Guernsey in the English Channel in 1831



Ayrshire

light to deep cherry red with white; came from the County of Ayr in Scotland in 1822

