



PREHISTORIC PLANET 2

EPISODE GUIDE

Beginning May 22, Season 2 of **Prehistoric Planet** goes back 66 million years to the Cretaceous period when flying giants soared in the air, reptiles patrolled the coast, and dinosaurs ruled the land. New discoveries are teaching us more than ever about how these amazing creatures including the little-known *Tarchia* survived, thrived, and interacted in surprising ways. From May 22-26, Apple TV+ is once again bringing **Prehistoric Planet** to life for a five-night event with dazzling graphics, new scientific knowledge, and even music using fossils as instruments — you'll see dinosaurs like never before!

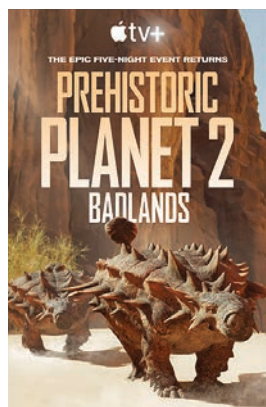
New dinosaurs. New habitats. New season.

The groundbreaking series is back with new dinosaurs and new habitats.



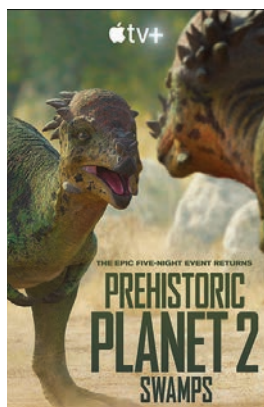
Islands

On a small island, a monumental display takes place as the giant *Hatzegopteryx* reveals his gentler side to woo a mate.



Badlands

Trudging through a scorching desert, two young *Tarchia* find relief at an oasis and encounter an adult twice their size, ready to lay claim.



Swamps

In a drought-stricken basin where much has perished, an old *Pachycephalosaur* bull defends his leadership against a young challenger.



Oceans

Deep beneath the water's surface, the world's largest predator — the *Mosasaurus* — lies in wait to ambush unsuspecting prey.



North America

Not many can intimidate North America's top predator, *T. rex*, whose size and bite are a deadly combo — except for a giant winged foe.



Check out the
Prehistoric Planet
five-night event on
Apple TV+
starting May 22!