

# Dermatology Detectives



Skin is your body's first line of defense. Skin is an armor that protects the body from disease, protects organs, and keeps us warm and cools us off. Our skin's appearance and condition can also indicate how healthy we are inside.

## Part 1

Put on your scrubs – patients are waiting! For each of the case studies below, use the web pages listed to determine which of these five skin conditions/diseases the patient may have based on the details presented.\* Write your answer on the line.

### Skin conditions/diseases:

- Eczema: [aad.org/public/diseases/eczema/childhood/child-have/difference-psoriasis](http://aad.org/public/diseases/eczema/childhood/child-have/difference-psoriasis)
- Hives: [aad.org/public/diseases/a-z/hives-overview](http://aad.org/public/diseases/a-z/hives-overview)
- Psoriasis: [aad.org/public/diseases/psoriasis/what/overview](http://aad.org/public/diseases/psoriasis/what/overview)
- Rosacea: [aad.org/public/diseases/acne/really-acne/acne-rosacea](http://aad.org/public/diseases/acne/really-acne/acne-rosacea)
- Skin cancer: [aad.org/public/diseases/skin-cancer/types/common/bcc/symptoms](http://aad.org/public/diseases/skin-cancer/types/common/bcc/symptoms)

**Patient A** has an itchy rash on their neck and hands, which the patient says appeared suddenly. The bumps are smooth raised welts. No one close to the patient has the same rash.

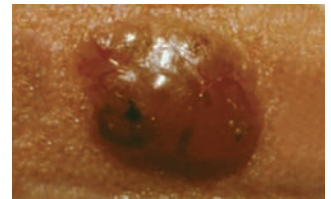


What might Patient A have? Why?

Possible condition/disease:

---

**Patient B** has a small round scaly patch near their ear. It does not itch but has not gone away. The patient does not have any other patches like it on their face or body.

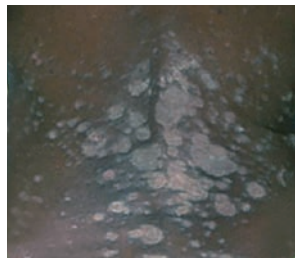


What might Patient B have? Why?

Possible condition/disease:

---

**Patient C** has thick, red, scaly patches on their elbows and knees. They have had these patches for some time, and they come and go in various places on the skin.



Is this eczema or psoriasis? Why?

Possible condition/disease:

---

**Patient D** has red areas on their face, especially around their nose and cheeks. Small blood vessels are visible around their nose. Their skin is very sensitive to sunscreens and skin care products. The patient thinks this is acne, but you know it's not.



What is it? Why?

Possible condition/disease:

---

\* *Disclaimer:* This activity and brief case studies are not meant as medical advice or diagnosis. If you have any questions about your skin, contact your doctor or a dermatologist as soon as possible.

## Part 2

There are some skin conditions that manifest themselves differently on different skin tones. These include rosacea, skin cancer, sarcoidosis, melanoma, and acne keloidalis nuchae. Research one of these skin conditions to learn about how they impact darker skin tones. Go to [aad.org/public/darker-skin/diseases](http://aad.org/public/darker-skin/diseases) to find out more information.

Find out more about being a medical expert in skin, hair, and nails at [aad.org](http://aad.org).



Images used with permission of the American Academy of Dermatology National Library of Dermatologic Teaching Slides.